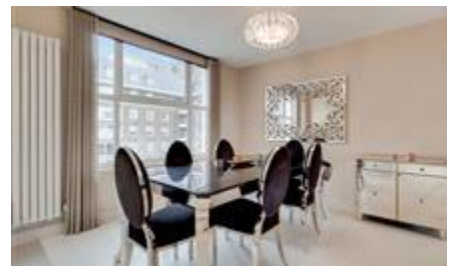


JAMES • KEI

LONDON




Boydell Court, St John's
Wood Park, London
£1,200 pw

AVAILABLE NOW

A beautifully presented three bedroom + office, two bathroom apartment available to rent in the sought-after Boydell Court, located in the heart of Swiss Cottage NW8.

Energy Efficiency Rating

	Current	Potential
<i>Very energy efficient - lower running costs</i> (92+) A		
(81-91) B		82
(69-80) C	72	
(55-68) D		
(39-54) E		
(21-38) F		
(1-20) G <i>Not energy efficient - higher running costs</i>		
England & Wales	EU Directive 2002/91/EC	

The energy efficiency rating is a measure of the overall efficiency of a home. The higher the rating the more energy efficient the home is and the lower the fuel bills will be.

Viewing	Strictly by appointment with James Kei London - Head Office Telephone
Reference	02034880310
Additional Information	RL0408

Whilst every effort is made to ensure the accuracy of these details, it should be noted that the measurements are approximate only. Floorplans are for representation purposes only and prepared according to the RICS Code of Measuring Practice by our floorplan provider. Therefore, the layout of doors, windows and rooms are approximate and should be regarded as such by any prospective tenant.